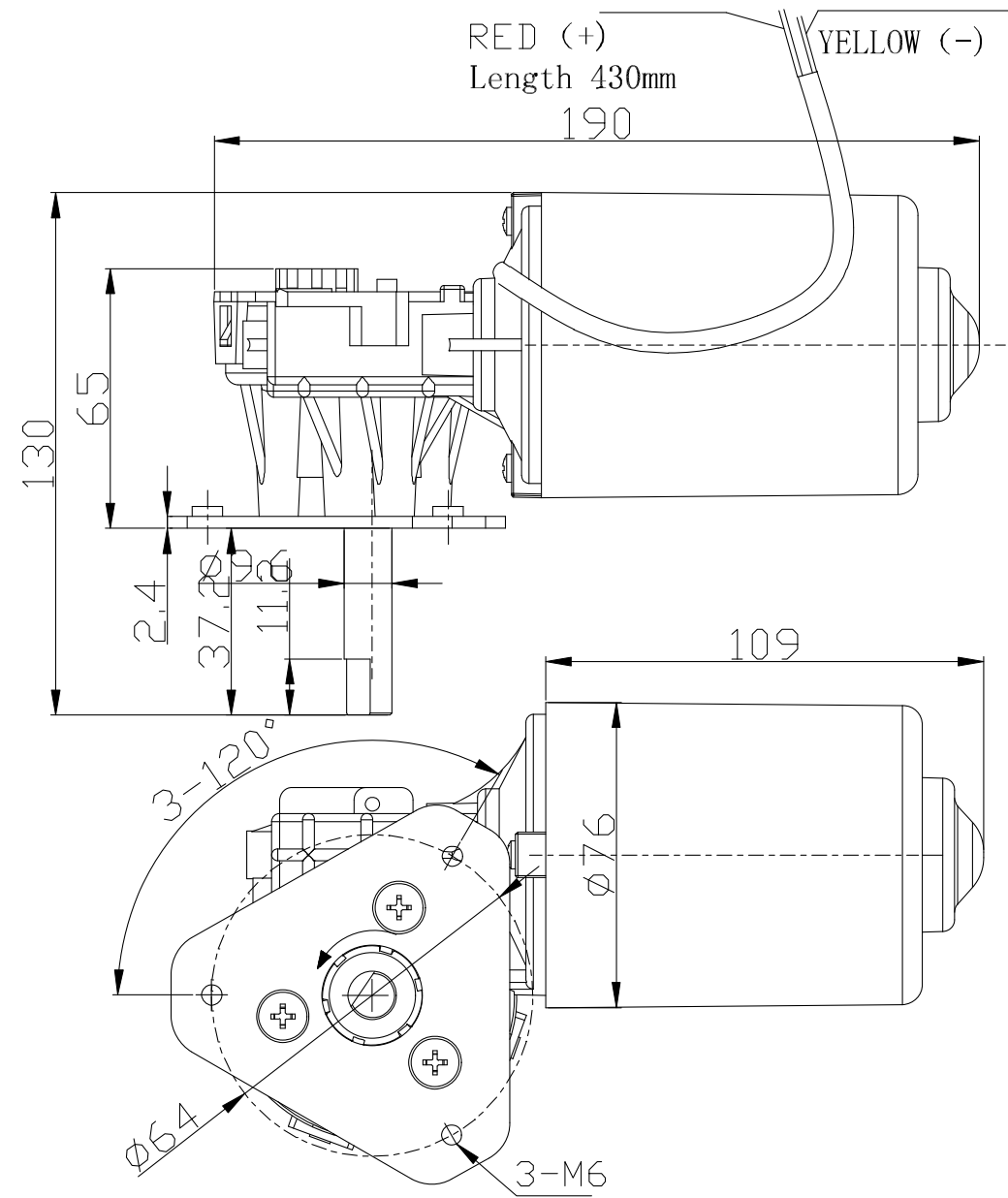
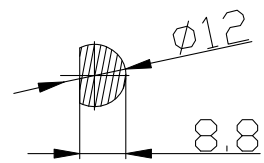
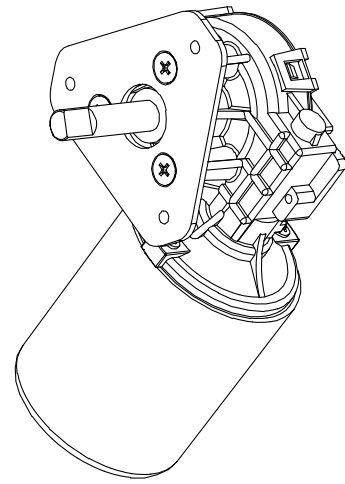


NC230 SPECIFICATIONS

MOTOR TYPE	Permanent magnet motor
Reduction Type	Worm gear
Rated Voltage(V)	24V
Stall torque(N·m)	≥10
Stall current (A)	≤5
Unload Specs	
Speed (r/min)	30±5rpm
Current (A)	≤1A



Technical requirement:

1. Main technical parameters of the motor as above table;
2. The motor rotate Anti-clockwise when the positive electrode of the power supply is connected to the positive electrode of the motor , facing the output shaft;
3. Grease should be applied to the worm wheel, worm rod and related mechanical moving parts during the motor assembly;
4. The connecting part of the screw shall be fastened during the motor assembly and not loose;
5. During the assembly test,keep distance 30cm the noise is less than 50dB, and the feel is smooth.

借 (通) 用 件 登 记
旧底图总号
底图卷号
签 字
日 期
档案员
档案员

							CIROLLA MOTOR CO.,LTD	
设计	设计	日期	设计日期	图样标记	重量	比例		
				图样标记 S		1:1		
				共 页 张	第 页 张			
							NC230-24-WX	