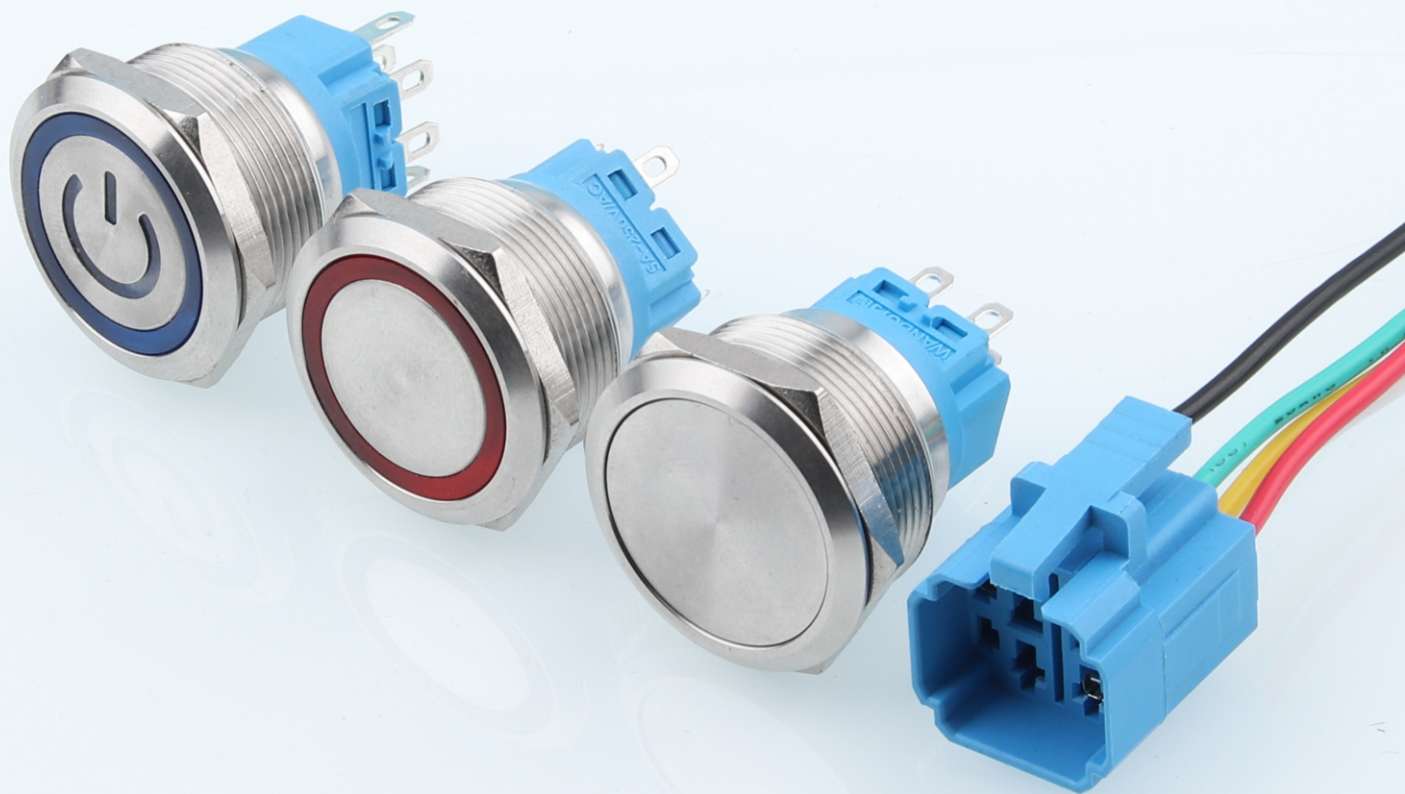


motoRobit.com

Parameter description **25B**



Metal

power switch button

Parameter Description

Electrical parameters

power level(silvering):	5A@125V AC or 3A@250V AC or 3A@30V DC
LED voltage:	3~220V
LED current:	1.5mA~20mA
LED light color:	red, yellow, blue, green, white, Two-color, three-color (Customizable multi-color)

Other Ratings

Contact Resistance:	The contact is made of silver alloy, and the maximum resistance is 50m Ω; The maximum value of gold plating of contact material is 30m Ω
Insulation Resistance:	200 megohms minimum @ 500V DC
Dielectric Strength:	1,900V AC minimum between contacts for 1 minute minimum
Mechanical Life:	Self reset type / more than 500000 times Self locking type / more than 250000 times
Electrical Life:	250,000 operations minimum
Nominal Operating Force:	Approx.: 1.5N
Contact Type:	1NO1NC
Travel:	Pretravel .059"(1.5mm); Overtravel .059"(1.5mm); Total Travel .118"(3.0mm)

Materials & Finishes

Button:	SUS304 Stainless Steel
shell:	SUS304 Stainless Steel
Base:	Pa66
Movable Contactor:	Silver-plated brass
Static contact pin:	Silver-plated brass
Active rod:	PA66
Compression spring:	SUS304
Wire:	20AWG

Environmental Data

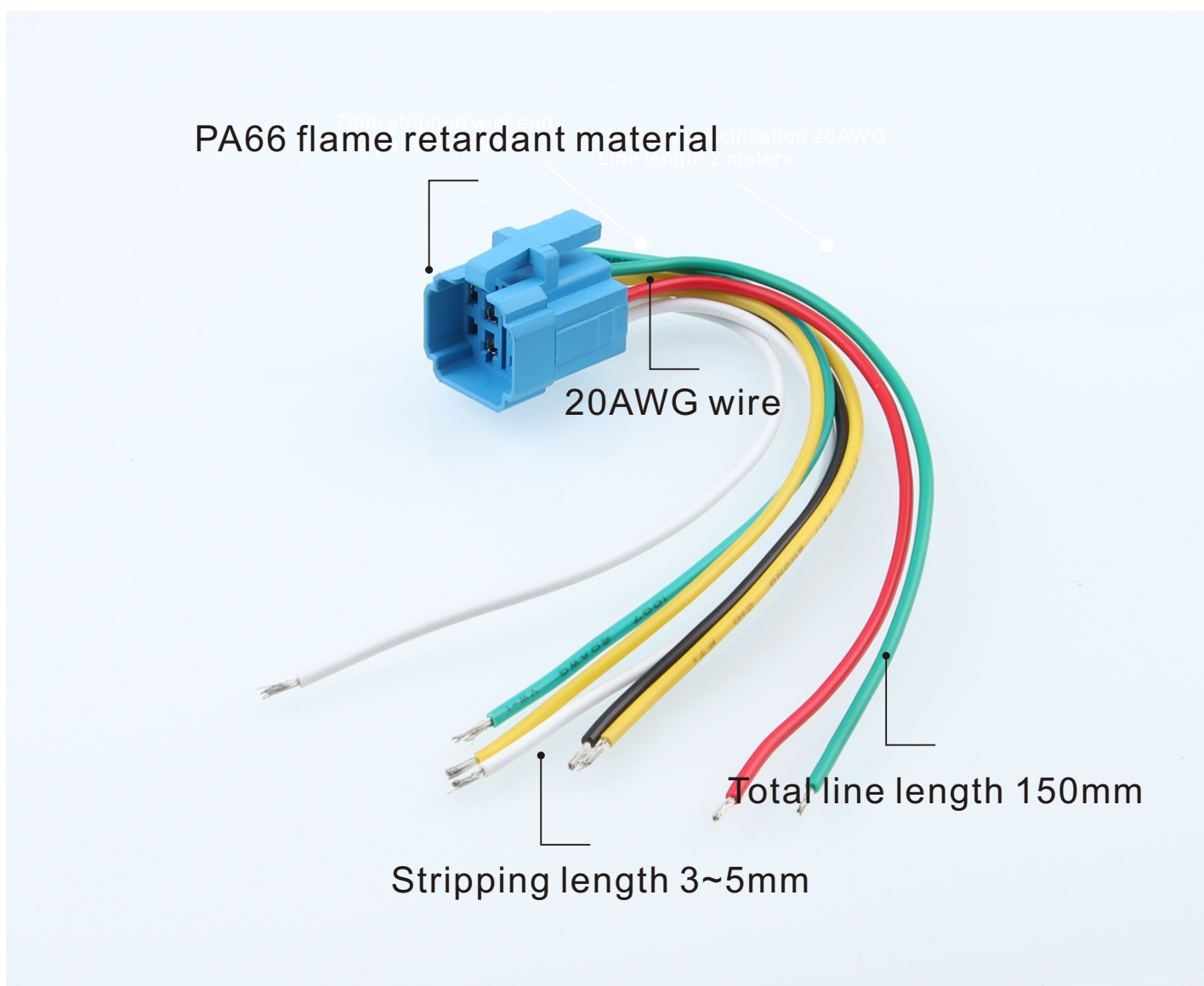
Operating Temperature Range:	-30°C through +85°C
Humidity:	90~95% humidity for 240 hours @ 40°C
Vibration:	10~55Hz with peak-to-peak amplitude of 1.5mm traversing the frequency range & returning in 1 minute; 3 right angled directions for 2 hours
Sealing:	Ip66

Installation

Installation aperture:	25mm
Soldering Time & Temperature:	The welding time is 3 seconds and the welding temperature is not higher than 280 °C

25B

Standard model illustration example
Switch configuration and accessories



Size and material application

25B-G1
25B-P1

25B-P1 -EC

25B-P1-C
25B-G1-C

25B-P1-E
25B-G1-E

